

***CHORAL BENEDICTION** (*sung twice; please join in!*)

When You Walk From Here text: *Linnea Good*
music: *Tom Witt*, arr. *Buckles*

When you walk from here, When you walk from here,
Walk with justice, Walk with mercy, and with God's humble care.

POSTLUDE

Intermezzo in Eb Major, Op 117. No. 1 ... *Johannes Brahms* (1833 - 1897)
Nicholas Place, piano

Today in Children's Religious Education (CRE)

CRE is honoring El Día de Los Muertos in our grade-based groups. Our talented friend Sophy Tuttle will be with us to offer festive face-paint designs!

If you have arrived today with a baby or small child, there is a nursery/playroom with the service piped in for your pleasure. Go through the leather door to the right of the pulpit, through the chapel, and the room will be on your left before the stairs.

- Pre-schoolers will be in the Chapel.
- Kindergarten-2nd graders will be in the Perkins Room.
- 3rd-6th graders will be with Carol in the Smith Room.
- 7th grade and up are invited to enjoy the sermon, or to join the children and share your gifts in the CRE program.

OWL is meeting in the Perkins Room from 1:00 to 3 PM.

PLEASE SILENCE YOUR CELL PHONE. THANK YOU!

At Your Service:

- * If you would like a large print order of service and hymns, or Brailled hymns
- * If you are having trouble hearing the service and would appreciate an assistive listening device
- * If you have mobility challenges and would like assistance

Any usher will be happy to help!

Service is Our Gift

Candles Coordinator, *Art Nava*
Lead Greeter, *David Scanlon*
Lead Usher, *Philip Roberts*
Worship Coordinators, *Joanna Lubkin and Melissa Dlugolecki*
Assistant Treasurers, *Philip Roberts and Scott Schroeder*
Altar and Cover Image, *Laura Evonne Steinman*

OUR UNITARIAN UNIVERSALIST FAITH

Arlington Street Church is an historic congregation (1729) with a progressive faith. Long on the cutting edge of movements for social justice, we affirm the inherent worth and dignity of every being. All are welcome!

CONGREGATIONAL LEADERSHIP

The Prudential Committee is the elected governing board of Arlington Street Church.

THE PRU MEMBERS ARE:

Alex Frost (chair) / Greg Haig (vice-chair)
Christine Curtiss / Dave Erbe / Mary Marcel
Kerry Marshall / Dan Moon / Tina Rose
Thomas Simers

OFFICERS OF THE CORPORATION ARE:

Tori Bell & Desmond Ravenstone (co-moderators)
Doc Kinne (clerk) / Susie Nacco (treasurer)

SPECIAL CONSIDERATIONS FOR SPECIAL NEEDS

FM amplification headsets are available from the ushers. Please do not remove them from the sanctuary. **Accessible** entry is via the ramp on the Arlington Street alley at the right-hand side of the front doors to the Church. **Braille** hymnals are available!

Please ask an usher for assistance.

CHILDREN'S PROGRAMMING

Children's Religious Education begins every Sunday in the sanctuary. Children are sung out near the beginning of the service and gather downstairs for CRE. Children rejoin their families in the sanctuary to end the service. Just off the Hunnewell Chapel is a nursery for fussy babies and their caregivers. The service is piped in, and a rocker, changing table and supplies are available. For information about our CRE program, please contact the church office or see our religious educator.

ALLELUIA!

At Arlington Street Church, we raise a hand and circle two fingers above our heads to signal joyous affirmation.

PARKING AT ARLINGTON STREET CHURCH

Parking on Sundays is available at the Back Bay Garage for a discount. Discount coupons are available at the Welcome Table after worship. Additional parking may be available on Arlington Street past "The Castle."

Staff Directory

Ministers

Rev. Kim K. Crawford Harvie, Sr. Minister
Office@ASCBoston.org, ext. 10
Rev. George G. Whitehouse, Minister at Large
GWhitehouse@ASCBoston.org, ext. 10
Beth Robbins, Intern Minister
BRobbins@ASCBoston.org

Music

Mark David Buckles, Director of Music
MBuckles@ASCBoston.org
Nicholas Place
Organist and Pianist
Office@ASCBoston.org, ext 10

Choir Section Leaders

Julie Gregorio, soprano
Emily Jaworski, mezzo soprano
Daniel Rosensweig, tenor
Justin Hicks, bass

Children's Religious Education

Laura Evonne Steinman, Religious Educator
& Artist in Residence, LES@ASCBoston.org
Erica Long, CRE Assistant
ELong@ASCBoston.org

Administration

Jeffrey Bouchard, Congregational Administrator
JBouchard@ASCBoston.org, ext. 14
Adam Berman, Bookkeeper
bookkeeper@ASCBoston.org
Brad Nobles, Sexton
JBouchard@ASCBoston.org, ext. 14
Laurinda O'Connor, Publications
Publications@ASCBoston.org

Church Office:

Hours: Monday – Friday, 9:00 AM - 5:00 PM
Phone: 617-536-7050

Urban Church Awareness

Remember to be mindful of your belongings, and throughout the week, please help to keep the outside doors to the church secure.



ARLINGTON STREET CHURCH
Unitarian Universalist

SUNDAY, NOVEMBER 1ST, 2015

**A CELEBRATION OF
DAY OF THE DEAD: EL DÍA DE LOS MUERTOS,
SAMHAIN, ALL SAINTS, AND ALL SOULS DAY**



Arlington Street Church
Boston, Massachusetts
Founded in 1729

Gathered in love and service for justice and peace

Arlington Street Church, Unitarian Universalist

Boston, Massachusetts

SUNDAY, NOVEMBER 1ST, 2015

**You are invited to stand as you are willing and able.*

*If you have brought photographs or mementos,
please feel free to place them on the altar before the service begins
or after the Story in the Sanctuary.*

PRELUDE

Prelude and Fugue in B Minor BWV 893

Prelude and Fugue in A Minor BWV 889

from *Well Tempered Clavier* Book 2

Johann Sebastian Bach (1685 - 1750)

Nicholas Place, piano

WELCOME, CHALICE LIGHTING, AND GREETINGS

The flaming chalice is the symbol of our free faith

*HYMN 1001

Breaths

STORY IN THE SANCTUARY

Bagpipes and Barbeque Laura Evonne Steinman

PRESENTE Rev. George G. Whitehouse

Calling out the names of loved ones who have died

INVOCATION

To My Old Brown Earth text and music: *Pete Seeger* (1919 - 2014)

choral arrangement: *Paul Halley* (b. 1950)

To my old brown earth
And to my old blue sky
I'll now give these last few molecules of "I."

And you who sing,
And you who stand nearby,
I do charge you not to cry.

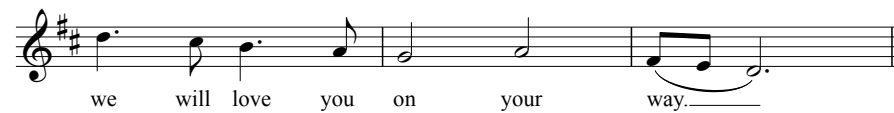
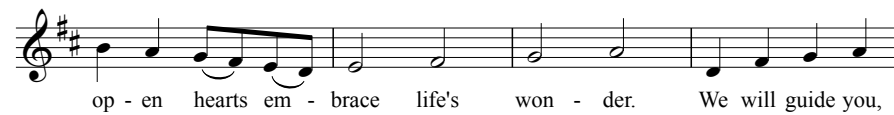
Guard well our human chain,
Watch well you keep it strong,
As long as sun will shine.

And this our home,
Keep pure and sweet and green,
For now I'm yours
And you are also mine.

CHILDREN'S BLESSING

Children's Benediction text: *Barbara Pescan*

music: *Bart Bradfield*



*At this time, all children are welcome to join
the Children's Religious Education program!*

COMMUNITY CANDLES OF SORROW & JOY

You are invited to share your sorrows and joys with the congregation by filling out a Candle Card in the back pew on the right-hand side of the sanctuary. Candle Cards are collected until the beginning of the first hymn. After the service, Candle Cards are posted downstairs during coffee hour. You may also submit a candle by Saturday night at the church website, ASCBoston.org, by clicking on "Worship."

Sanctuary *John W. Thompson* and *Randy Scruggs* (b. 1953)

text adapted by *Crawford Harvie / Buckles*

music arranged by *Mark David Buckles* (b. 1980)

Open my heart to be a sanctuary
All made holy, loved and true
With thanksgiving, I'll be a living
Sanctuary for you

AFFIRMATION AND COVENANT

Love is the spirit
of this congregation,
And service is our gift.

This is our great covenant:
To dwell together in peace,
To speak our truths in love,
And to help one another.

El amor es el espíritu
de nuestra congregación
Y el servicio es nuestro regalo.

Esto es a lo que nos comprometemos:
Convivir en paz,
Hablar nuestras verdades con amor,
Y ayudarnos los unos a los otros.

*HYMN 101

Abide with Me

SERMON

Post-Traumatic Growth Rev. Kim K. Crawford Harvie

SILENT REFLECTION, MEDITATION, AND PRAYER

ANTHEM

Hark, I Hear the Harps Eternal

text and tune: *Rev. William Hauser* (1812 - 1880)

music: *Alice Parker* (b. 1925)

OUR SHARED RESPONSIBILITY

Over 300 pledging members and friends support the work of Arlington Street Church with commitments averaging \$20 a week plus volunteer service. Whatever you give is greatly appreciated. Please consider a generous donation today! Contributions placed in an envelope will be credited toward your pledge or gift.

OFFERTORY

Amelia music: *Northern Harmony* and *Mia Friedman* (b. 1990)

text: *Isaac Watts* (1674 - 1748) and *Mia* and *Lev Friedman* (b. 1950)

Julie Metcalf, fiddle and vocals

Mark David Buckles, guitar and vocals

'Tis joy enough, my all in all
At thy dear feet to lie
Thou wilt not let me lower fall
And none can higher fly

Oh, lord, the sorrows I've endured
Are great beyond my control
No other hand but thine can cure
The anguish of my soul

To thee I sing in my dark hour
To thee my eyes are cast
My heart lifted by redeeming power
All fades, but thou shalt last

All my desires to thee are known
Thine eye count every tear
And every sigh and every moan
Is noticed by thine ear

Thou wilt display thy sovereign grace
Whenst all my comforts spring
I wilt employ my lips in praise
To thee salvation sing

PARISH HIGHLIGHTS

*HYMN 103

For All the Saints

*BENEDICTION AND EXTINGUISHING THE CHALICE

continued on next page...