

Arlington Street Church, Unitarian Universalist

Boston, Massachusetts

SUNDAY, OCTOBER 23RD, 2016

You are invited to share your sorrows and joys with the congregation by filling out a Candle Card in the back pew on the right-hand side of the sanctuary. Candle Cards are collected until the end of Greetings.

PRELUDE

The Inners *Joe Hisaishi* (b. 1950)

Watermark *Enya* (b. 1961)

Precious Time *Keiko Matsui* (b. 1961)

Linli Wang, piano

INTROIT

The Fourth Principle *Mark David Buckles* (b. 1980)

Emily Jaworski, mezzo soprano

We believe in a free and responsible search for truth and meaning.

WELCOME, CHALICE LIGHTING, AND GREETINGS

The flaming chalice is the symbol of our free faith.

THE DEDICATION OF

CHRISTOPH EMERSON HARRIS & DOMINICK AXEL HARRIS

Reading 715, Your Children *Kahlil Gibran* (1883 - 1931)

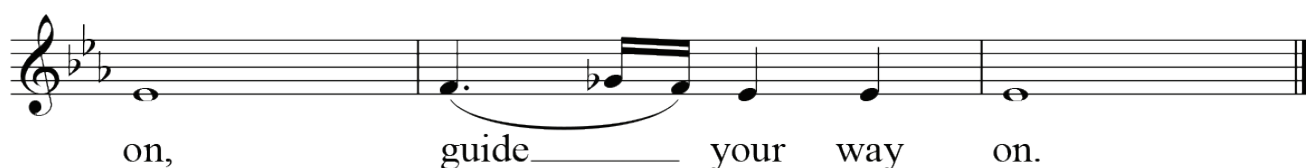
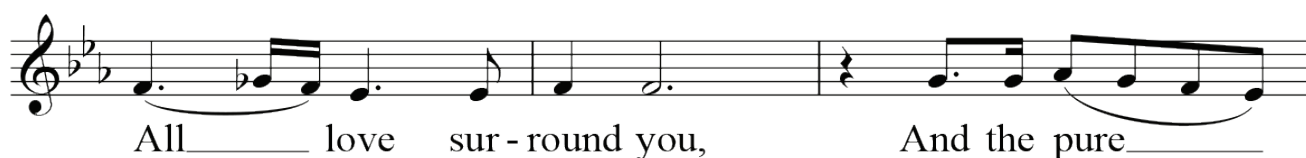
*HYMN 38

Morning Has Broken

CHILDREN'S BLESSING

Longtime Sun *Mike Heron* (b. 1942)

from *A Very Cellular Song* arranged: *Mark David Buckles* (b. 1980)



At this time, all children are welcome to join the Children's Religious Education program!

**You are invited to stand as you are willing and able.*

COMMUNITY CANDLES OF SORROW & JOY

Sanctuary *John W. Thompson and Randy Scruggs (b. 1953)*
text adapted: *Crawford Harvie/Buckles*
music arranged: *Mark David Buckles (b. 1980)*

Emily Jaworski, mezzo soprano

Open my heart to be a sanctuary
All made holy, loved and true
With thanksgiving, I'll be a living
Sanctuary for you

AFFIRMATION AND COVENANT

| | |
|------------------------------|-------------------------------------|
| Love is the spirit | El amor es el espíritu |
| of this congregation, | de nuestra congregación |
| And service is our gift. | Y el servicio es nuestro regalo. |
| This is our great covenant: | Esto es a lo que nos comprometemos: |
| To dwell together in peace, | Convivir en paz, |
| To speak our truths in love, | Hablar nuestras verdades con amor, |
| And to help one another. | Y ayudarnos los unos a los otros. |

*HYMN 152

Follow the Drinking Gourd

SERMON

Calling Rev. Kim K. Crawford Harvie

SILENT REFLECTION, MEDITATION, AND PRAYER

ANTHEM

Gonna Get Through This World ... text: *Woody Guthrie (1912 - 1967)*
music: *Lisa Gutkin (The Klezmatics)*
choral arrangement: *Nick Page (b. 1952)*

Well I'm gonna get through this world
The best I can, if I can
And I'm gonna get through this world
And I think I can.

Well I'm gonna work in this world
The best I can, if I can
And I'm gonna work in this world
And I think I can

Well I'm gonna walk in this world
The best I can, if I can...
And I'm gonna talk in this world
The best I can, if I can
And I think I can.

Well, I'm gonna clean up this world
The best I can, if I can...
I'm gonna leave this world behind
The best I can, if I can
And I think I can.

OUR SHARED RESPONSIBILITY

During the offertory, you are invited to open your heart and engage in the spiritual practice of generosity. For 287 years, the

abundant support of our community has allowed Arlington Street Church to remain a beacon for liberal religious values in downtown Boston. Your gifts in the Sunday plate sustain both the church and the larger community – half of the offering is shared with a partner in our mission of love, service, justice, and peace. *Thank you for your stewardship and support!*

OFFERTORY

Blowin’ in the Wind *Bob Dylan* (b. 1941)
 Mark David Buckles, guitar and vocals
 Julie Metcalf, violin and vocals
in celebration of Bob Dylan receiving the Nobel Prize for Literature

PARISH HIGHLIGHTS

***HYMNS**

153 ~ Oh, I Woke Up this Morning with my Mind Stayed on Freedom
 116 ~ I’m On My Way

***BENEDICTION AND EXTINGUISHING THE CHALICE**

***RECESSIONAL** (*sung twice; please join in!*)

When You Walk From Here text: *Linnea Good*
 music: *Tom Witt*, arranged: *Mark David Buckles*
*When you walk from here, When you walk from here,
 Walk with justice, Walk with mercy, and with God’s humble care.*

POSTLUDE

Paper Clouds *Kevin Kern* (b. 1958)
 Linli Wang, piano

Today in Children’s Religious Education (CRE)

If you have arrived with a baby or small child, welcome! There is a nursery/playroom with the service piped in for your listening pleasure. Go through the leather door to the right of the pulpit and cross through the chapel. The nursery will be on your left before the stairs.

| CRE Group | Pre-K (2- 5yrs) | Spirit Play (K-2nd grade) | UU Super Heroes (3rd-5th grade) | Coming of Age (6th-8th grade) | Youth Group (8th-12th grade) |
|---|------------------|---------------------------|--------------------------------------|---|--|
| Location | Hunnewell Chapel | Perkins Room | Carol Smith Room | Sanctuary | Sanctuary |
| Each Sunday, CRE groups start off with the sharing of sorrows and joys. | | | | | |
| Lesson | Autumn Stories | Child Dedication | The UU Tradition of Child Dedication | Join UU Super Heroes or remain in the service; trip to Walden Pond! | Remain in the service or help in any CRE class |

Share the Plate: Stand with Standing Rock

The Standing Rock Sioux Tribe is locked in a legal battle to stop the Dakota Access Pipeline from impacting its cultural, water, and natural resources. The Dakota Access Pipeline is a 1,168-mile crude oil pipeline that will transport nearly 570,000 barrels each day from North Dakota to Illinois. The Army Corps of Engineers green-lighted several parts of the process without fully satisfying the National Historic Preservation Act, various environmental statutes, and its responsibility to the Standing Rock Sioux Tribe.

The current proposed pipeline route crosses under Lake Oahe, just a half mile up from the Standing Rock Sioux Reservation. This is another chapter in the long history of the federal government granting the construction of potentially hazardous projects near or through tribal lands, waters, and cultural places without consulting the tribe. Your generous contributions to the collection this month will allow Arlington Street to Stand with Standing Rock to protect their water and sacred places.