

March Share the Plate: Only a Child

Only a Child, founded in Guatemala City in 1994 by Arlington Street member George Leger, maintains a shelter and carpentry shop and ensures an education for street kids.

The shelter, housing up to a dozen guys at a time, is far more than a place to sleep; it provides a surrogate family in which the youth are taught responsibility and accountability and develop confidence and self-esteem.

All of them work, many in the on-site carpentry shop, where they learn carpentry skills and produce finely crafted cedar boxes they sell to support the program.

They also go to school. In a bid to maximize the kids' chances to leave the streets once and for all, we sponsor their tuition at high-quality independent schools and at university.

Service is Our Gift

Candles Coordinator, *Robert Holley*
Candles Chaplain, *Art Judge*
Lead Greeter, *Queen Cheryl*
Lead Usher, *Kevin Tyrrell*
Worship Coordinator, *Art Nava*
Assistant Treasurers, *Nancy George & Kevin Tyrrell*

At Your Service:

- * If you would like a large print order of service or hymnal or a Braille hymnal
- * If you are having trouble hearing the service and would appreciate an assistive listening device
- * If you have mobility challenges and would like assistance

Any usher will be happy to help!

PLEASE SILENCE YOUR CELL PHONE. THANK YOU!

Urban Church Awareness

Remember to be mindful of your belongings, and throughout the week, please help to keep the outside doors to the church secure.

OUR UNITARIAN UNIVERSALIST FAITH

Arlington Street Church is an historic congregation (1729) with a progressive faith. Long on the cutting-edge of movements for social justice, we affirm the inherent worth and dignity of every being. All are welcome!

CONGREGATIONAL LEADERSHIP

The Prudential Committee is the elected governing board of Arlington Street Church.

THE PRU MEMBERS ARE:

Tina Rose (chair) / Rick Cresta (vice chair)
Dave Erbe / Lois Hartsough / Al Ingram / Eve Lauria / Art Nava / Ted Rudinsky / Connie Scanlon

OFFICERS OF THE CORPORATION ARE:

Art Nava (treasurer) / Tori Bell & Gaby Whitehouse (co-moderators) / Doc Kinne (clerk)

SPECIAL CONSIDERATIONS FOR SPECIAL NEEDS

FM amplification headsets are available from the ushers. Please do not remove them from the sanctuary. **Accessible** entry is via the ramp on the Arlington Street alley at the right-hand side of the front doors to the Church. **Braille** hymnals are available! Please ask an usher for assistance.

TIFFANY WINDOWS

The 2015 restoration of Arlington Street Church's Tiffany stained glass windows was made possible through the generous support of this congregation, an anonymous donor, and the George B. Henderson Foundation. The guided tour program for our historic church and its unique Tiffany stained glass windows will begin again on April 25, 2017. Tours will be offered Tuesday through Saturday during April and May and Monday through Saturday from June to October. More information is available at office@ASCBoston.org.

ALLELUIA!

At Arlington Street Church, we raise a hand and circle two fingers above our heads to signal joyous affirmation.

PARKING AT ARLINGTON STREET CHURCH

Parking on Sundays is available at the Back Bay Garage for a discount. Discount coupons are available at the Welcome Table after worship. Additional parking may be available on Arlington Street past "The Castle."

Staff Directory

Parish Ministers

Rev. Kim K. Crawford Harvie, *Senior Minister*
Rev. George G. Whitehouse, *Minister at Large*
Beth Robbins, *Intern Minister*

Community Ministers

Dr. Arthur Judge
Hospital Chaplain, retired
Rev. Clyde Grubbs
Interim Minister, Cambridge
Rev. Fred Small
Minister for Climate Justice
Rev. Joanna Lubkin
Chaplain, Wellesley College
Rev. Vera O'Brien
Chaplain, Brigham and Women's Hospital

Intern Ministers

Erica Rose Long
Massachusetts General Hospital
Liz Weber
UU Church of Reading, Massachusetts

Music

Mark David Buckles, *Director of Music*
Linli Wang, *Organist and Pianist*
Rodger Clinton Vine, *Artist in Residence*

Choir Section Leaders

Julie Gregorio, *soprano*
Emily Jaworski, *mezzo soprano*
Daniel Rosensweig, *tenor*
Lawson Daves, *bass*

Children's Religious Education (CRE)

Laura Evonne Steinman, *CRE Director and Artist in Residence*
Jaimie Dingus, *CRE Assistant*

Administration

Jeffrey Bouchard, *Congregational Administrator*
Adam Berman, *Bookkeeper*
Brad Nobles, *Sexton*
Laurinda O'Connor, *Publications*

All staff members may be reached through the church office

Office@ASCBoston.org or 617-536-7050



**ARLINGTON
STREET CHURCH**
Unitarian Universalist

SUNDAY, MARCH 26TH, 2017

7 Unitarian Universalist PRINCIPLES

1. The inherent **WORTH** and **DIGNITY** of every being
2. **JUSTICE**, **EQUITY**, and **COMPASSION** in all relations
3. **ACCEPTANCE** of one another and encouragement of **SPIRITUAL GROWTH**
4. A free and responsible search for **TRUTH** and **MEANING**
5. The right of **CONSCIENCE** and the use of the **DEMOCRATIC** process
6. The goal of world community with **PEACE**, **LIBERTY**, and **JUSTICE** for all
7. **RESPECT** for the **INTERDEPENDENT WEB** of which we are a part

Arlington Street Church, *Unitarian Universalist*
351 Boylston Street
Boston, Massachusetts 02116-3303

Office Hours: Monday - Friday, 9:00 am to 5:00 pm
Phone: 617-536-7050 • Fax: 617-536-7051
E-mail: office@ASCBoston.org • Web: www.ASCBoston.org

Arlington Street Church
Boston, Massachusetts
Founded in 1729

Gathered in love and service for justice and peace

Arlington Street Church, Unitarian Universalist

Boston, Massachusetts

SUNDAY, MARCH 26TH, 2017

You are invited to share your sorrows and joys with the congregation by filling out a Candle Card in the back pew on the right-hand side of the sanctuary. Candle Cards are collected until the end of greetings.

PRELUDE

Return to the Heart

A Path with Heart

Compassionata David Lanz (b. 1950)

Linli Wang, piano

WELCOME AND CHALICE LIGHTING

The flaming chalice is the symbol of our free faith

INTROIT

Our Great Covenant music: Mark David Buckles (b. 1980)

text: Arlington Street Church's Affirmation and Covenant

Lawson Daves, bass

*GREETINGS

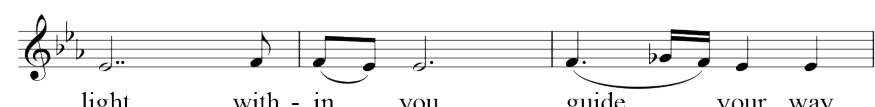
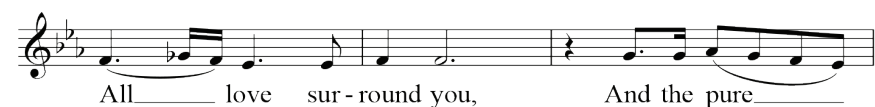
*HYMN 1008

When Our Heart Is in a Holy Place

CHILDREN'S BLESSING

Longtime Sun Mike Heron (b. 1942)

from A Very Cellular Song arranged: Mark David Buckles (b. 1980)



At this time, all children are welcome to join the Children's Religious Education program!

COMMUNITY CANDLES OF SORROW & JOY

Sanctuary John W. Thompson and Randy Scruggs (b. 1953)

text adapted: Crawford Harvie/Buckles

music arranged: Mark David Buckles (b. 1980)

Emily Jaworski, mezzo soprano

Open my heart to be a sanctuary

All made holy, loved and true

With thanksgiving, I'll be a living

Sanctuary for you

AFFIRMATION AND COVENANT

Love is the spirit
of this congregation,
And service is our gift.

This is our great covenant:
To dwell together in peace,
To speak our truths in love,
And to help one another.

El amor es el espíritu
de nuestra congregación
Y el servicio es nuestro regalo.
Esto es a lo que nos comprometemos:
Convivir en paz,
Hablar nuestras verdades con amor,
Y ayudarnos los unos a los otros.

*HYMN

Love Everyone Marcus Mack

1. Oh the Sun, oh it shines on everyone
Oh the Sun, oh it shines on everyone
We say peace to all, life to all
We say love, love, love everyone,
Love everyone
2. When it rains, oh it rains on everyone....
3. When we pray, oh we pray for everyone...
4. So we pray, oh we pray for everyone...

SERMON

Empathy Rev. Kim K. Crawford Harvie

SILENT REFLECTION, MEDITATION, AND PRAYER

ANTHEM

The Opening Doors text: Rev. Olympia Brown (1835 - 1926)
music: John Kramer (b. 1973)

Lift high the gates,
Open wide the doors,
Give liberty to all.
Open wide the doors for all
To a larger life and higher ideal,
Give us eyes to see the Divine in all.

Every one a child of God,
Worthy of respect,
Needing justice and liberty
To thrive

OUR SHARED RESPONSIBILITY

During the offertory, you are invited to open your heart and engage in the spiritual practice of generosity. For 288 years, the abundant support of our community has allowed Arlington Street Church to remain a beacon for liberal religious values in downtown Boston. Your gifts in the Sunday plate sustain both the church and the larger community – half of the offering is shared



with a partner in our mission of love, service, justice, and peace. As a convenient option, you may text the word GIVE to 617-300-0509 or scan the QR code.

Thank you for your stewardship and support!

OFFERTORY

Awake, Thou Wintry Earth, BWV 129 J. S. Bach (1685 - 1750)
arr. Homer Whitford (1892 - 1980)

Rodger Clinton Vine, organ

PARISH HIGHLIGHTS

*HYMN 95

There is More Love

*BENEDICTION AND EXTINGUISHING THE CHALICE

*RECESSIONAL (sung twice; please join in!)

When You Walk From Here text: Linnea Good
music: Tom Witt, arranged: Mark David Buckles

When you walk from here, When you walk from here,
Walk with justice, Walk with mercy, and with God's humble care.

POSTLUDE

Toccatà, from Pièces de Fantaisie, Op. 53 Louis Vierne (1870 - 1937)

Rodger Clinton Vine, organ

Children's Programming

The Children's Religious Education (CRE) program begins each Sunday in the sanctuary. After the opening hymn, children/youth are sung out to gather downstairs for age-appropriate CRE groups. Each group begins with a ritual of sharing sorrows and joys before their lesson. Children/youth rejoin the larger community in the sanctuary to end the service together.

Just off the Hunnewell Chapel, there is a nursery for restless babies and their caregivers. This space offers a rocking chair, changing table with supplies, and a live audio feed of the service. For more information about children's programming at Arlington Street Church, please contact Laura Evonne Steinman, Director of CRE, at LES@ASCBoston.org.

CRE Group	Pre-K (2-5yrs)	Spirit Play (K-2nd grade)	UU Super Heroes (3rd-5th grade)	Coming of Age (CoA) (6th-8th grade)	Youth Group (8th - 12th grade)
Location	Hunnewell Chapel	Perkins Room	Carol Smith Room	Parish Hall	Sanctuary

CRE has started a Children's Collection Ritual. This offering will be received as the children leave the sanctuary for their CRE groups and added to the congregation's collection for the day.

Today CRE will be learning about and preparing for the STOP HUNGER NOW service project!

**You are invited to stand as you are willing and able.*