

## POSTLUDE

Chorale and Variations (1930) ..... *Maurice Duruflé* (1902 - 1986)

Rodger Clinton Vine, organ

## Children's Religious Education Programming

All CRE children and youth will gather in the Hunnewell Chapel for the sharing of joys and sorrows and the story of flower communion.

After the service, enjoy lunch and ice cream with CRE! At 1:30, let's meet on the front steps and cross the street to the Public Garden together to take a Swan Boat ride!

Today is the final Sunday before our summer CRE program break. Childcare will be provided during the summer in the box pew at the front right of the sanctuary.

Next to the Hunnewell Chapel, there is a nursery for restless babies and their caregivers. This space offers a rocking chair, changing table with supplies, and a live audio feed of the service. For more information about children's programming at Arlington Street Church, please contact Laura Evonne Steinsman, Director of CRE, at LES@ASCBoston.org.

## June Share the Plate: Summer Camp Camperships

Several of our Boston-based partners in our mission of love, service, justice, and peace run summer camps to help get kids and youth off the city streets and into the woods. Some of our favorites include Lend a Hand Society, Morgan Memorial Goodwill Industries (Fresh Air Camps), and Unitarian Universalist Urban Ministry (Into the Woods). Our gifts this month will be directed to support their life-changing work. Thank you for your generosity!

### Service is Our Gift

Candles Coordinator, *Patrick Cooleybeck*  
Candles Chaplain, *Art Judge*  
Lead Greeter, *David Scanlon*  
Lead Usher, *Mike Cournoyer*  
Worship Coordinator, *Melissa Dlugolecki*  
Assistant Treasurers, *Alma Antoniotti & Gail Jennes*

### At Your Service:

- \* If you would like a large print order of service or hymnal or a Braille hymnal
- \* If you are having trouble hearing the service and would appreciate an assistive listening device
- \* If you have mobility challenges and would like assistance

*Any usher will be happy to help!*

### Urban Church Awareness

Remember to be mindful of your belongings, and throughout the week, please help to keep the outside doors to the church secure.

## OUR UNITARIAN UNIVERSALIST FAITH

Arlington Street Church is an historic congregation (1729) with a progressive faith. Long on the cutting-edge of movements for social justice, we affirm the inherent worth and dignity of every being. All are welcome!

## CONGREGATIONAL LEADERSHIP

The Prudential Committee is the elected governing board of Arlington Street Church.

### THE PRU MEMBERS ARE:

*Tina Rose (chair) / Rick Cresta (vice chair)*  
*Dave Erbe / Lois Hartsough / Al Ingram / Eve Lauria / Art Nava / Ted Rudinsky / Connie Scanlon*

### OFFICERS OF THE CORPORATION ARE:

*Art Nava (treasurer) / Tori Bell & Gaby Whitehouse (co-moderators) / Doc Kinne (clerk)*

## SPECIAL CONSIDERATIONS FOR SPECIAL NEEDS

**FM amplification** headsets are available from the ushers. Please do not remove them from the sanctuary. **Accessible** entry is via the ramp on the Arlington Street alley at the right-hand side of the front doors to the Church. **Braille** hymnals are available! Please ask an usher for assistance.

## TIFFANY WINDOWS

The 2015 restoration of Arlington Street Church's Tiffany stained glass windows was made possible through the generous support of this congregation, an anonymous donor, and the George B. Henderson Foundation. The guided tour program for our historic church and its unique Tiffany stained glass windows is now open. Tours are offered Monday through Saturday from June to October. More information is available at office@ASCBoston.org.

## ALLELUIA!

At Arlington Street Church, we raise a hand and circle two fingers above our heads to signal joyous affirmation.

## PARKING AT ARLINGTON STREET CHURCH

Parking on Sundays is available at the Back Bay Garage for a discount. Discount coupons are available at the Welcome Table after worship. Additional parking may be available on Arlington Street past "The Castle."

## Staff Directory

### Parish Ministers

**Rev. Kim K. Crawford Harvie**, *Senior Minister*  
**Rev. George G. Whitehouse**, *Minister at Large*  
**Beth Robbins**, *Intern Minister*

### Community Ministers

**Dr. Arthur Judge**  
*Hospital Chaplain, retired*  
**Rev. Clyde Grubbs**  
*Interim Minister, Cambridge*  
**Rev. Fred Small**  
*Minister for Climate Justice*  
**Rev. Joanna Lubkin**  
*Chaplain, Wellesley College*  
**Rev. Vera O'Brien**  
*Chaplain, Brigham and Women's Hospital*

### Intern Ministers

**Erica Rose Long**  
*Massachusetts General Hospital*  
**Liz Weber**  
*UU Church of Reading, Massachusetts*

### Music

**Mark David Buckles**, *Director of Music*  
**Linli Wang**, *Organist and Pianist*  
**Emily Jaworski**, *Assistant Conductor*  
**Rodger Clinton Vine**, *Artist in Residence*

### Choir Section Leaders

**Julie Gregorio**, *soprano*  
**Daniel Rosensweig**, *tenor*  
**Lawson Daves**, *bass*

### Children's Religious Education (CRE)

**Laura Evonne Steinman**, *CRE Director and Artist in Residence*  
**Jaimie Dingus**, *CRE Assistant*

### Administration

**Jeffrey Bouchard**, *Congregational Administrator*  
**Adam Berman**, *Bookkeeper*  
**Brad Nobles**, *Sexton*  
**Laurinda O'Connor**, *Publications*

All staff members may be reached through the church office

Office@ASCBoston.org or 617-536-7050

Arlington Street Church, *Unitarian Universalist*  
351 Boylston Street  
Boston, Massachusetts 02116-3303

Office Hours: Monday - Friday, 9:00 am to 5:00 pm  
Phone: 617-536-7050 • Fax: 617-536-7051  
E-mail: office@ASCBoston.org • Web: www.ASCBoston.org



ARLINGTON  
STREET CHURCH  
Unitarian Universalist

SUNDAY, JUNE 11<sup>TH</sup>, 2017

HAPPY PRIDE WEEKEND!

NEW MEMBER JOINING SUNDAY

FLOWER COMMUNION



Arlington Street Church  
Boston, Massachusetts  
Founded in 1729

*Gathered in love and service for justice and peace*

# Arlington Street Church, Unitarian Universalist

Boston, Massachusetts

SUNDAY, JUNE 11<sup>TH</sup>, 2017

You are invited to share your sorrows and joys with the congregation by filling out a Candle Card in the back pew on the right-hand side of the sanctuary. Candle Cards are collected until the end of greetings.

## PRELUDE

Woodland Sketches ..... Edward MacDowell (1860 - 1908)

- I. To a Wild Rose
- VI. To a Water Lily

Andrew Altenbach, piano

## WELCOME, CHALICE LIGHTING, AND GREETINGS

The flaming chalice is the symbol of our free faith

## PROCESSION OF THE FLOWERS

Children's Religious Education (CRE)

\*Hymn 396 I Know This Rose Will Open

arr. Mark David Buckles (b. 1980)

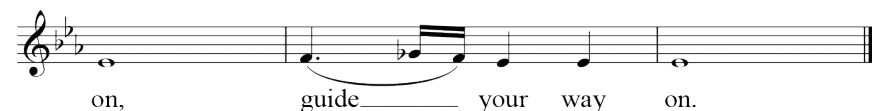
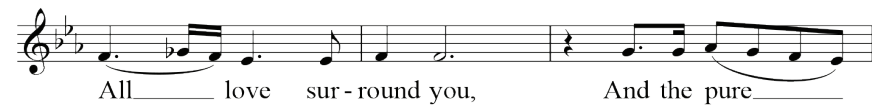
## NEW MEMBER JOINING CEREMONY

Responsive Reading #442, We Bid You Welcome

## CHILDREN'S BLESSING

Longtime Sun ..... Mike Heron (b. 1942)

from *A Very Cellular Song* ..... arranged: Mark David Buckles (b. 1980)



At this time, all children are welcome to join the Children's Religious Education (CRE) program!

## COMMUNITY CANDLES OF SORROW & JOY

Sanctuary ..... John W. Thompson and Randy Scruggs (b. 1953)

text adapted: Crawford Harvie/Buckles

music arranged: Mark David Buckles (b. 1980)

Open my heart to be a sanctuary  
All made holy, loved and true  
With thanksgiving, I'll be a living  
Sanctuary for you

## AFFIRMATION AND COVENANT

Love is the spirit  
of this congregation,  
And service is our gift.  
This is our great covenant:  
To dwell together in peace,  
To speak our truths in love,  
And to help one another.

El amor es el espíritu  
de nuestra congregación  
Y el servicio es nuestro regalo.  
Esto es a lo que nos comprometemos:  
Convivir en paz,  
Hablar nuestras verdades con amor,  
Y ayudarnos los unos a los otros.

## \*HYMN 77

Seek Not Afar for Beauty ..... arr. Mark David Buckles (b. 1980)

(sung to the tune of *Hymn 164, The Peace Not Past Our Understanding*)

## SERMON

Rewriting the Script ..... Rev. Kim K. Crawford Harvie

## SILENT REFLECTION, MEDITATION, AND PRAYER

## ANTHEM

The Bud ..... text: Galway Kinnell (1927 - 2014)

music: Jason Shelton (b. 1972)

The bud  
stands for all things,  
even for those things that don't flower,  
for everything flowers, from within, of self-blessing;  
though sometimes it is necessary  
to reteach a thing its loveliness,  
to put a hand on its brow  
of the flower  
and retell it in words and in touch  
it is lovely  
until it flowers again from within, of self-blessing.  
*~ from Saint Francis and the Sow*

## OUR SHARED RESPONSIBILITY

During the offertory, you are invited to open your heart and engage in the spiritual practice of generosity. For 288 years, the abundant support of our community has allowed Arlington Street Church to remain a beacon for liberal religious values in downtown Boston.

Your gifts in the Sunday plate sustain both the church and the



larger community – half of the offering is shared with a partner in our mission of love, service, justice, and peace. As a convenient option, you may text the word GIVE to 617-300-0509 or scan the QR code.

Thank you for your stewardship and support!

## OFFERTORY

Pastorale for Violin and Organ ..... Arcangelo Corelli (1653 - 1713)

Julie Metcalf, violin

Rodger Clinton Vine, organ

## PARISH HIGHLIGHTS

### FLOWER COMMUNION

Beth Robbins, Laura Evonne Steinman, and Jaimie Dingus

Viens, Mallika, les lianes en fleurs ..... *Clément Léo Delibes* (1836 - 1891)

"The Flower Duet" from *Lakmé*

Julie Gregorio, soprano; Emily Jaworski, mezzo soprano

### \*HYMN

Life Calls Us On ..... text: Rev. Kendyl Gibbons (b. 1955)

music: Rev. Jason Shelton (b. 1972)



2. Words and deeds of those be - fore us\_ Wa - ken here to keep us

3. Loy - al guides in love and du - ty\_ Lead us with a trust - ed

4. We have shared a ra - diant hour\_ When the truth has made us



strong;\_ Blend our voi - ces in the chor - us\_

light;\_ Blest are they whose in - ward beau - ty\_

free;\_ And the spir - it's gra - cious pow - er\_



Of cre - a - tion's liv - ing song.\_ Cour - age bids us lift our

Shows the path of truth and right.\_ Hon - or is their earth - ly

Dreamed of good that yet shall be.\_ Bright the path be - fore us



eyes;\_ Up - ward to the shin - ing skies; Hope calls us

prize;\_ By their work we re - a - lize, Faith calls us

lies;\_ Joy - ful pil - grims now we rise; Life calls us



on, \_ Hope calls us\_ on.\_

on, \_ Faith calls us\_ on.\_

on! \_ Life calls us\_ on!

### \*BENEDICTION AND EXTINGUISHING THE CHALICE

#### CHORAL BENEDICTION

An Irish Blessing ..... text: *Traditional Gaelic blessing*

music: *Everett Reed*

May the road rise to meet you.  
May the wind be always at your back.  
May the sun shine warm upon your face.  
May the rains fall soft upon your fields.  
And until we meet again,  
May God hold you in the palm of His/Her hand

### \*RECESSIONAL (sung twice; please join in!)

When You Walk From Here ..... text: *Linnea Good*

music: *Tom Witt*, arranged: *Mark David Buckles*

When you walk from here, When you walk from here,  
Walk with justice, Walk with mercy, and with God's humble care.

*\*You are invited to stand as you are willing and able.*