

**LET'S COME TOGETHER TO
CELEBRATE THE HOLIDAYS !**

Holiday Events, Holiday Services

- Dec. 12, 11AM** Mitten Tree Sunday ~ Please bring new men's gloves, hats, and scarves for our Friday Night Supper Guests
- 12:30PM** Christmas Music on the Piano ~ Rodger Clinton Vine
1PM Carol Sing
- Dec. 19, 11AM** Christmas Sunday ~ Lessons and Carols
- Dec. 21, 8PM** Winter Solstice Vespers ~ Beautiful readings, meditation by candlelight, songs, & wassailing the trees in the Public Garden
- Dec. 24, 5PM** Christmas Eve by Candle Light family service
7 & 9PM Community Services with the Boston Gay Men's Chorus

For more information, visit www.ASCBoston.org. All Are Welcome!

At Your Service:

- * If you would like a large print order of service and hymns, or Brailled hymns
- * If you are having trouble hearing the service and would appreciate an assistive listening device
- * If you have mobility challenges and would like assistance

Service is Our Gift

Assistant Treasurers, Alma Antoniotti and Gail Jennes
Candles Coordinator, Liz Weber
Lead Greeter, Mark Watanabe
Lead Usher, Rob Cuddi
Worship Coordinator, Rebecca Froom

**IF YOU FELT THIS WAS A GREAT SERVICE,
NEXT WEEK, BRING A FRIEND TO SHARE IN THE JOY!**

OUR UNITARIAN UNIVERSALIST FAITH

“Direct experience of that transcending mystery and wonder, affirmed in all cultures, which moves us to a renewal of the spirit and an openness to the forces which create and uphold life.”

This is the first of the six sources of Unitarian Universalism from which our living tradition draws. To read all six sources, as well as the seven principles of our free faith, please see the Our Faith brochure in the pew rack.

ALLELUIA!

At Arlington Street Church, we raise a hand and circle two fingers above our heads to signal joyous affirmation.

CONGREGATIONAL LEADERSHIP

The Prudential Committee is the elected governing board of Arlington Street Church.

THE MEMBERS ARE:

*Rob Cotta / Doug Fiero (chair) / Danny Fournier
Carmen Griggs / Mark MacDonnell /
Karl Paulnack (vice-chair) / Deb Pontes
Mickey Randazza / Bob Sessions*

OFFICERS OF THE CORPORATION ARE:

*Paul Dakin (council chair) / Samuel Gloyd &
Diana Miller (co-moderators) / David McClain
(clerk) / Susie Nacco (treasurer)*

CHILDREN'S PROGRAMMING

CRE begins every Sunday in the sanctuary. Children are sung out near the beginning of the service and gather downstairs in the Perkins Room for CRE. There is an adjacent toddler room for parents with children ages 1-5. Fussy babies and their parents are invited to the Nursery just off the Hunnewell Chapel, where a rocker, changing table and supplies are available. Children rejoin their families in the sanctuary to end the service. For information about our Children's Religious Education program, please contact the church office or see the religious educator.

SPECIAL CONSIDERATIONS FOR SPECIAL NEEDS

FM amplification headsets are available from the ushers. Please do not remove them from the sanctuary. **Accessible** entry is via the ramp on the Arlington Street alley at the right-hand side of the front doors to the Church. **Braille** hymnals are available! Please ask an usher for assistance.

PARKING AT ARLINGTON STREET CHURCH

Parking on Sundays is available at the Back Bay Garage for a discount. Discount coupons are available at the Welcome Table after worship. Additional parking may be available on Arlington Street past "The Castle."

Directory

Ministry

Rev. Kim K. Crawford Harvie, Sr. Minister
Office@ASCBoston.org, ext. 10

Rev. George G. Whitehouse, Minister at Large
GWhitehouse@ASCBoston.org, ext. 10

Rev. Eugene B. Navias, Assoc. Min. Emeritus
Rebecca Froom, Intern Minister
RFroom@ASCBoston.org, ext. 18

Music

Mark David Buckles, Director of Music
MBuckles@ASCBoston.org, ext. 19

Molly Wood, Collaborative Pianist
Office@ASCBoston.org, ext 10

Choir Section Leaders

Rachel Gitner, soprano
Glorivy Arroyo, mezzo soprano
Marques Hollie, tenor
J. Jacob Krause, baritone, Assistant Conductor

Program

Laura Evonne Steinman, Religious Educator
LES@ASCBoston.org, ext. 12

JP LaFond, R. E. Assistant

Administrative

Phyllis Guiliano, Church Administrator
PG@ASCBoston.org, ext. 16
print@ASCBoston.org
web@ASCBoston.org

Jeffrey Bouchard, Assistant to the Administrator
JBouchard@ASCBoston.org, ext. 14

Brad Nobles, Sexton
JBouchard@ASCBoston.org, ext. 17

NB: To reach any staff member by phone, dial 617-536-7050. When prompted, enter *8 and then their extension.



**ARLINGTON
STREET CHURCH**
Unitarian Universalist

SUNDAY, DECEMBER 12TH, 2010

MITTEN TREE SUNDAY
ADVENT 3: JOY!

**THE LIVING TRADITION WHICH
WE SHARE DRAWS FROM MANY
SOURCES INCLUDING:**

*Direct experience of that tran-
scending mystery and wonder,
affirmed in all cultures, which
moves us to a renewal of the spirit
and an openness to the forces
which create and uphold life.*

Arlington Street Church, *Unitarian Universalist*
351 Boylston Street
Boston, Massachusetts 02116-3303

Office Hours: Monday - Friday, 9:00 am to 5:00 pm
Phone: 617-536-7050 • Fax: 617-536-7051
E-mail: office@ASCBoston.org • Web: www.ASCBoston.org

Arlington Street Church
Boston, Massachusetts
Founded in 1729

Gathered in love and service for justice and peace

Arlington Street Church, Unitarian Universalist

Boston, Massachusetts

SUNDAY, DECEMBER 12TH, 2010

MITTEN TREE SUNDAY

ADVENT 3: JOY!

PRELUDE

Vesper Voluntaries, Op. 14 *Edward Elgar* (1857-1934)
Molly Wood, organ

CALL TO WORSHIP

The Second Principle *Mark David Buckles* (b. 1980)
We believe in justice, equity, and compassion in all relations. Amen.

CHALICE LIGHTING

Kālidāsa (c.4th - 6th c. CE)

WELCOME

LIGHTING OF THE ADVENT WREATH

The Christmas that I Celebrate, adapted from, *Roger E. Greeley*
Maya, Anna, Sarah, and Patrick Cooleybeck

PARISH HIGHLIGHTS AND GREETINGS

One Member's Journey *Karl Paulnack*

*HYMN 226

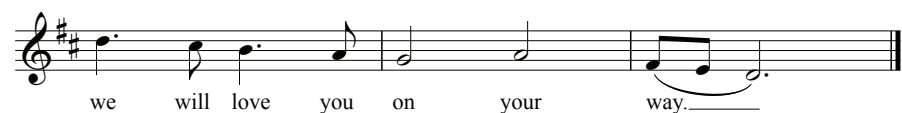
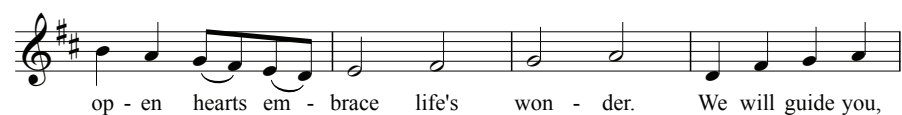
People, Look East

DECORATING THE MITTEN TREE

Rockin' Around the Christmas Tree *Johnny Marks*
The Chipmunk Song *Ross Bagdasarian*
Let It Snow! Let It Snow! Let It Snow! *Sammy Cahn, Jule Styne*
Molly Wood, piano

CHILDREN'S BLESSING

Children's Benediction text: *Barbara Pescan*
music: *Bart Bradfield*



Following the Children's Blessing, all children are always welcome to join us for Children's Religious Education!

COMMUNITY CANDLES OF SORROW & JOY

You are invited to share your sorrows and joys with the congregation by filling out a Candle Card in the back pew on the right-hand side of the sanctuary. Candle Cards are collected until the beginning of the first hymn. After the service, Candle Cards are posted downstairs during coffee hour. You may also submit a candle by Saturday night at the church website, ASCBoston.org, by clicking on "Worship."

Some of us pray with our words, some of us pray through our actions, and some of us use words other than prayer to describe our connection to the divine and one another. As you feel called, please join us in singing the chorus of *Healing Prayer*.

Healing Prayer music: *Nick Page* (b. 1952)
text: *African American Spiritual "Balm in Gilead" and Nick Page*
Glorivy Arroyo, mezzo soprano; J. Jacob Krause, baritone



AFFIRMATION AND COVENANT

Love is the spirit of this congregation, And service is our gift. This is our great covenant: To dwell together in peace, To speak our truths in love, And to help one another.	El amor es el espíritu de nuestra congregación Y el servicio es nuestro regalo. Esto es a lo que nos comprometemos: Convivir en paz, Hablar nuestras verdades con amor, Y ayudarnos los unos a los otros.
---	---

*HYMN

Meditation on Breathing *Sarah Dan Jones* (b. 1962)

SERMON

Holy Emptiness *Rev. Kim K. Crawford Harvie*

SILENT REFLECTION, MEDITATION, AND PRAYER

ANTHEM

Love Came Down at Christmas
text: *Christina Rossetti* (1830-1894), alt.
music: *Carson P. Cooman* (b. 1982)

Love came down at Christmas,
Love all lovely, love divine;
Love was born at Christmas,
Star and angels gave the sign.

Worship we the Godhead,
Love incarnate, love divine;
Worship we our Jesus:
But wherewith for sacred sign?

Love shall be our token,
Love be yours and love be mine,
Love to God and to all the world,
Love for plea and gift and sign.

OUR SHARED RESPONSIBILITY

Over 300 pledging members and friends support the work of Arlington Street Church with commitments averaging \$20 a week plus volunteer service. Whatever you give is greatly appreciated. Please consider a generous donation today! Contributions placed in an envelope will be credited toward your pledge or gift.

OFFERTORY

Greensleeves trad. arr. *Richard Purvis* (1913-1994)
Rodger Clinton Vine, organ

*HYMN 235

Deck the Hall with Boughs of Holly

*BENEDICTION AND EXTINGUISHING THE CHALICE

Rhoda E. McCulloch (1884-1978)

*CHORAL BENEDICTION (sung twice; please join us!)

When You Walk From Here text: *Linnea Good*
music: *Tom Witt*, arr. *Buckles*

When you walk from here, When you walk from here,
Walk with justice, Walk with mercy, And with God's humble care.

POSTLUDE

Finale (Fugato and Presto) from *Variations on a Noel*
Rodger Clinton Vine, organ *Marcel Dupré* (1886-1971)

**You are invited to stand as you are willing and able.*

TODAY – December 12th, 2010

Children's Religious Education (CRE)

December's focus is our third Unitarian Universalist Principle: Acceptance of each other and spiritual growth!

This week, we will be reading *The Mitten Tree Story* by Candace Christiansen and sharing how we can grow from this story. We will also be creating some of our own felt mittens for holiday cards to sell during coffee hour. Donations will go toward the matching gift for Friday Night Supper Program!

PLEASE SILENCE YOUR CELL PHONE. THANK YOU!